



Area Developments Updates

WBLLA Meeting

June 25th, 2011

Topics

- Bike and Pedestrian Trail
- Battle Lake Complete Streets
- Glendalough Park Partners



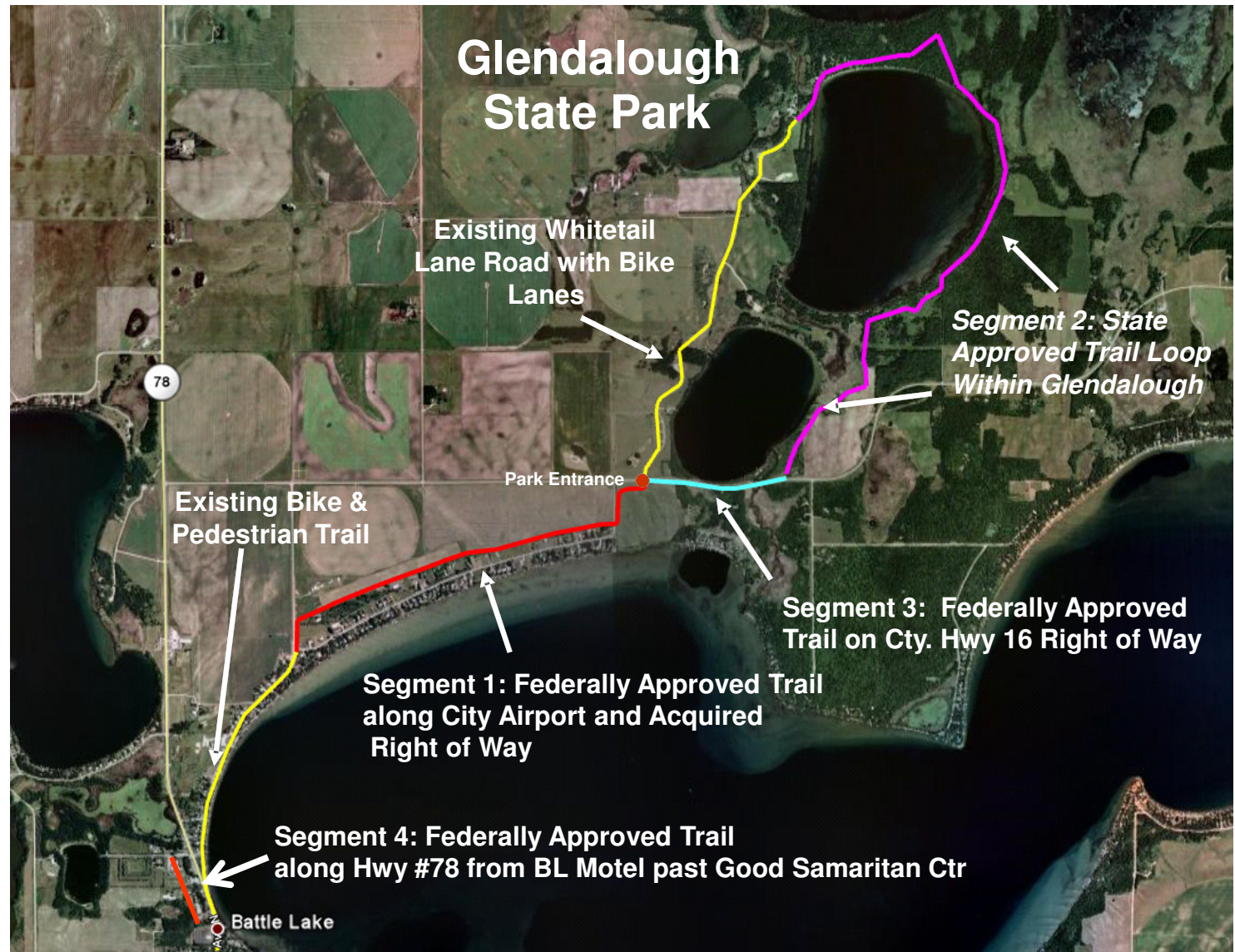
Lakes Area
Development Association

Glendalough Bike and Pedestrian Trail

12+ Mile Bike & Pedestrian Trail

- Six Integrated Segments
 - Existing:
 - Downtown Battle Lake to Airport
 - Whitetail Lane in Glendalough
 - New:
 - Battle Lake Airport to Glendalough (1.65 miles)
 - Glendalough Park Loop (3 miles)
 - Trail on OTC Hwy 16 ROW (.65 miles)
 - Halverson Trail along Good Samaritan (.25 miles)
 - Future:
 - Segments off from Whitetail Lane in the Park

12+ Mile Bike & Pedestrian Trail



Construction Timelines

- Glendalough Park Segment in 2011 or 2012
 - 3.0 Miles of Trail
 - \$350,000 Minnesota State Bonding + DNR amenities
- Molly Stark Segment in 2012!
 - .65 Miles of Non-motorized Trail
 - \$134,000 Project, \$100,000 Federal Grant
- BL to Glendalough Entrance in 2013
 - 1.65 Miles of Non-motorized Trail
 - \$284,000 Project, \$175,000 Federal Grant
 - \$125,000 Philanthropy
- Halverson Park / Good Sams in 2013 or 2015
 - .25 Miles of Non-motorized Trail
 - \$60,000 Project, \$50,000 Federal Grant



Lakes Area
Development Association

Battle Lake Complete Streets

Hwy #78 & Complete Streets: 2013

- MN DOT Transportation Advisory Committee
 - Hwy #78 Resurfacing in 2013
 - Complete Streets Program to Address Health
 - State 90% Cost Share with City's under 5,000
- City of Battle Lake approved:
 - Feasibility Study
 - Water and Sewer Assessment
 - Complete Streets Resolution
 - Committee to work with MN DOT

Example: Hwy 169 in St. Peter

Before



Pedestrian crossings up to 90 feet

Example: Hwy 169 in St. Peter

After



Crossings reduced to 54 and 66 feet



Lakes Area
Development Association

Glendalough Park Partners

Partners Making a Difference

Park Amenities Funded

- Annie Battle Bridge
- Molly Stark Picnic Shelter
- Lodge Restoration
- Trail Center Renovation and Addition
- Heating for the Camper Cabins
- Prairie Restoration Transplants
- Park Entrance Logo Signs
- Bird Feeding Stations
- Log Splitter
- Defibrillator
- MiFi: Verizon Mobile 3G / 4G Internet Hot Spots



Becoming a Park Partner

Partner Level

- Park Pal (\$10):
- Supporter (\$25):
- Donor (\$50):
- Patron (\$100):
- Benefactor (\$500):

Membership Gifts

Tracks and Trails Newsletter
T & T's + Magnet Gift
T & T's + Glendalough T-Shirt
T & T's + Historical DVD
T & T's + Glendalough Print

Mail your tax-deductible Park Partner membership to:

Glendalough Park Partners

P.O. Box 901

Battle Lake, MN 56515



Lakes Area
Development Association

Questions and Answers